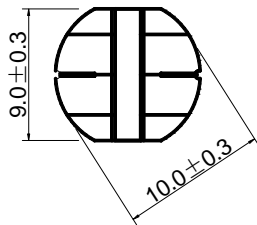


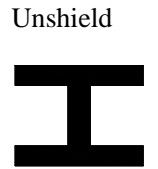
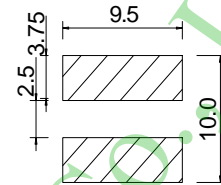
Inductance Range: 1.0μH~1200μH
Temperature Range: -40℃~+125℃

PD107-Series

DIMENSIONS(mm)



LAND PATTERNS(mm) CONSTRUCTION



FEATURES:

- ★Quantity / Reel: 500pcs
- ★High current & low DCR, Round 10.0mm, Height 6.5mm Type.
- ★The use of carrier tape package for SMT reflow soldering process
- ★Widely use in DC-DC converter/LCD TV/Notebook/
PDA/MP3 & MP4 player/Digital camera/DVD etc.
- ★Design to customer requirement

RoHS Compliant(SGS Certified Result)

Pb	Cd	Cr+6	PBBs	PBDEs
<1000ppm	ND	ND	ND	ND

Electrical Characteristics:

Part Number	Test Condition	Inductance (μH)	Tolerance (%)	D.C.R(Ω) Max.	Rated Current(A)
PD107-1R0M	100KHz/0.3V	1.0	±20	8m	9.50
PD107-1R8M	100KHz/0.3V	1.8	±20	11m	8.60
PD107-2R2M	100KHz/0.3V	2.2	±20	12m	8.00
PD107-3R3M	100KHz/0.3V	3.3	±20	16m	6.80
PD107-3R9M	100KHz/0.3V	3.9	±20	17m	6.35
PD107-4R7M	100KHz/0.3V	4.7	±20	19m	5.45
PD107-5R6M	100KHz/0.3V	5.6	±20	24m	4.30
PD107-6R8M	100KHz/0.3V	6.8	±20	35m	3.52
PD107-8R2M	100KHz/0.3V	8.2	±20	45m	3.51
PD107-100M	1KHz/0.3V	10	±20	60m	3.50
PD107-120M	1KHz/0.3V	12	±20	70m	3.40
PD107-150K,M	1KHz/0.3V	15	±10,±20	80m	3.10
PD107-220K,M	1KHz/0.3V	22	±10,±20	0.10	2.60
PD107-330K,M	1KHz/0.3V	33	±10,±20	0.12	2.30
PD107-390K,M	1KHz/0.3V	39	±10,±20	0.14	2.10
PD107-470K,M	1KHz/0.3V	47	±10,±20	0.17	1.95
PD107-560K,M	1KHz/0.3V	56	±10,±20	0.19	1.85
PD107-680K,M	1KHz/0.3V	68	±10,±20	0.22	1.65
PD107-820K,M	1KHz/0.3V	82	±10,±20	0.25	1.50
PD107-101K,M	1KHz/0.3V	100	±10,±20	0.35	1.40
PD107-151K,M	1KHz/0.3V	150	±10,±20	0.47	1.20
PD107-221K,M	1KHz/0.3V	220	±10,±20	0.73	0.95
PD107-331K,M	1KHz/0.3V	330	±10,±20	1.15	0.80
PD107-391K,M	1KHz/0.3V	390	±10,±20	1.30	0.75
PD107-471K,M	1KHz/0.3V	470	±10,±20	1.48	0.65
PD107-561K,M	1KHz/0.3V	560	±10,±20	1.90	0.60
PD107-681K,M	1KHz/0.3V	680	±10,±20	2.25	0.50
PD107-821K,M	1KHz/0.3V	820	±10,±20	2.55	0.48
PD107-102K,M	1KHz/0.3V	1000	±10,±20	3.00	0.46
PD107-122K,M	1KHz/0.3V	1200	±10,±20	3.50	0.35

- 1、Inductance is measured with a LCR meter:HP4284A & 3532-50 or equivalent.
- 2、D.C .R is measured with a Digital Multimeter TH2512B or equivalent.
- 3、Rated Current: The rated current is the current at which the inductance decreases by 25% from the initial value or the temperature rise is ΔT=40℃ ,whichever is smaller(Ta=20℃).